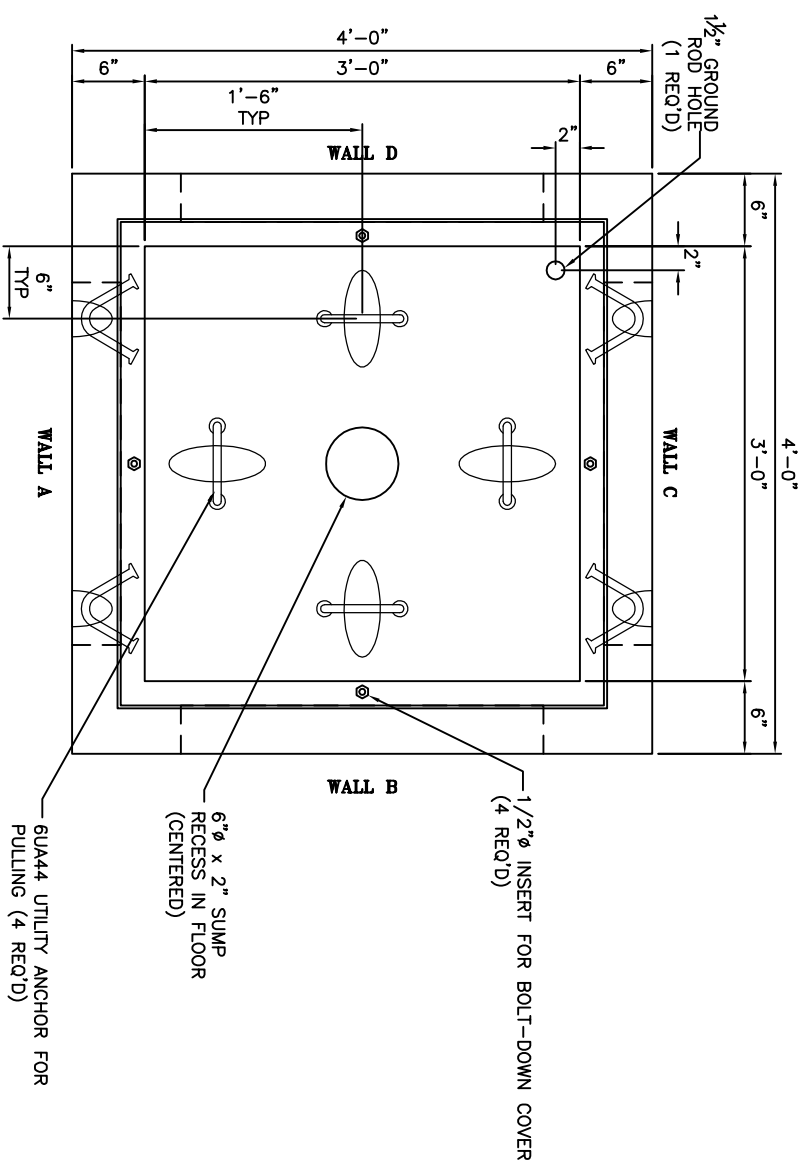


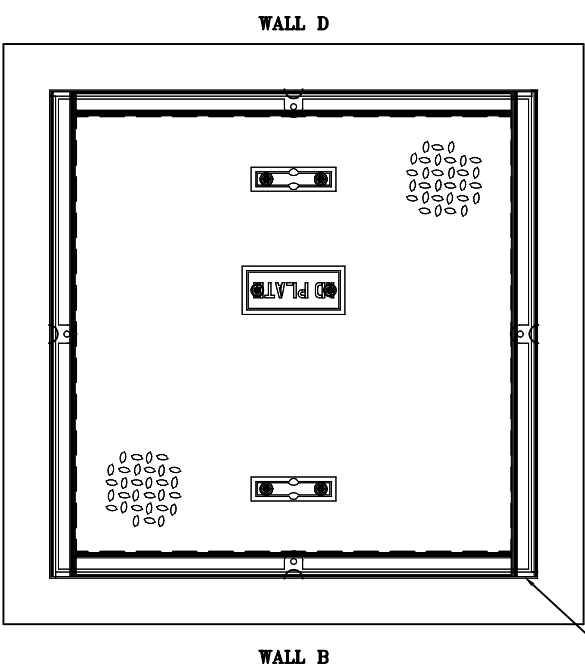
3'-0" x 3'-0" x 3'-0" PULL BOX

GENERAL NOTES:

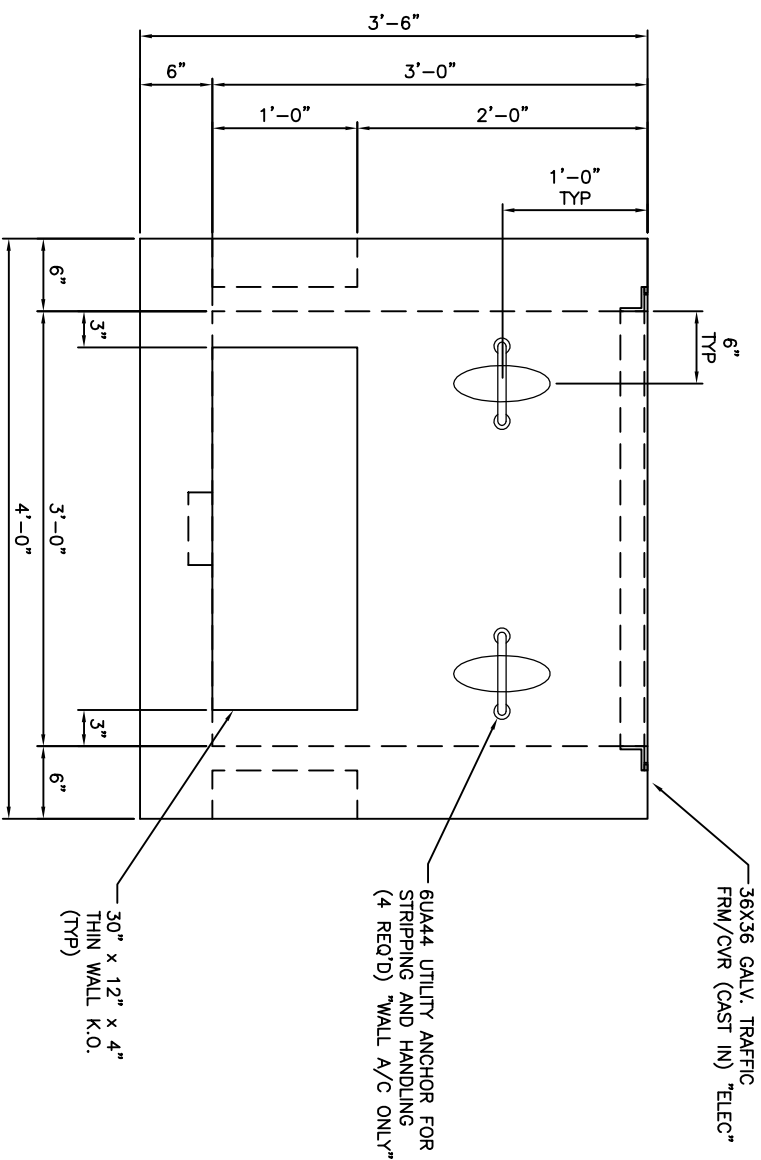
- DESIGN LOAD:** ASHTO H-20-44, CONTINUOUS TRAFFIC (FULL H-20).
- STRUCTURAL CONCRETE:** CONCRETE SHALL BE 6000 PSI MIN. CEMENT SHALL BE ASTM C150.
- REINFORCING STEEL:** REINFORCING STEEL SHALL BE ASTM A-615 GRADE 60UNLESS OTHERWISE NOTED. DIMENSIONS FOR FABRICATED REINFORCING STEEL ARE OUT TO OUT. ALL OTHER DIMENSIONS RELATING TO REINFORCING STEEL ARE TO BAR CENTERS UNLESS OTHERWISE NOTED.
- FINISH OF CONCRETE:** BOTTOM OF BASE SHALL BE A STEEL TROWEL FINISH. ALL OTHER SURFACES SHALL BE AN INDUSTRIAL FORM FINISH.



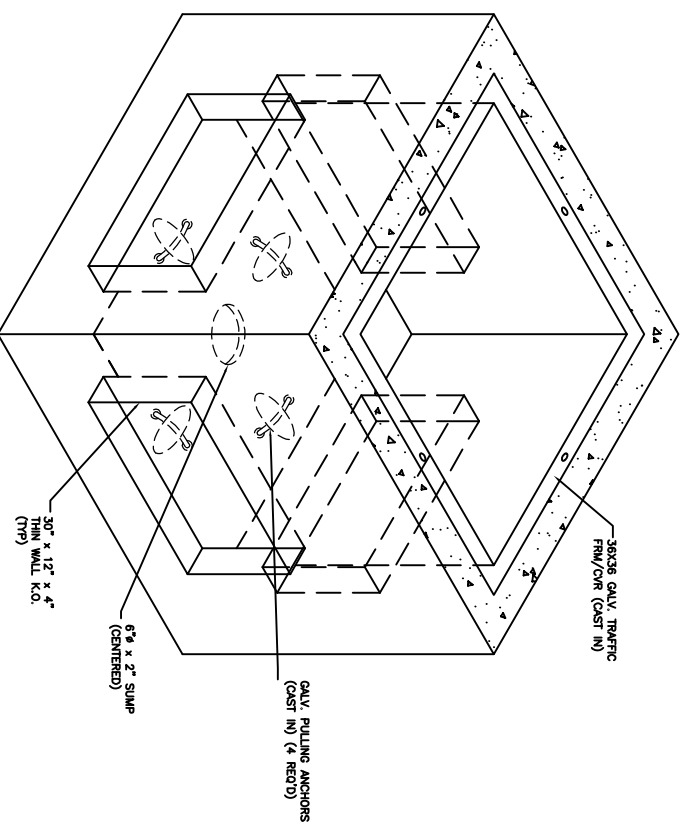
PLAN VIEW
SCALE: 1 1/2" = 1'-0"



PLAN VIEW W/ FRM & CVR
SCALE: 1 1/2" = 1'-0"



ELEVATION VIEW
SCALE: 1 1/2" = 1'-0"



ISOMETRIC VIEW
N.T.S.

WEIGHT: APPROXIMATELY 3,850 lbs EACH

WALL C
36X36 GALV. TRAFFIC FRM/CVR (CAST IN) "ELEC"

STRUCTURAL CONCRETE: CONCRETE SHALL BE 6000 PSI MIN. CEMENT SHALL BE ASTM C150.

REINFORCING STEEL: REINFORCING STEEL SHALL BE ASTM A-615 GRADE 60UNLESS OTHERWISE NOTED. DIMENSIONS FOR FABRICATED REINFORCING STEEL ARE OUT TO OUT. ALL OTHER DIMENSIONS RELATING TO REINFORCING STEEL ARE TO BAR CENTERS UNLESS OTHERWISE NOTED.

FINISH OF CONCRETE: BOTTOM OF BASE SHALL BE A STEEL TROWEL FINISH. ALL OTHER SURFACES SHALL BE AN INDUSTRIAL FORM FINISH.

APPROVED BY: _____

COMPANY: _____

DATE: _____

The drawing and all information contained herein are the property of Waskey Bridge, Inc. and shall remain the property of Waskey Bridge, Inc. until such time as the drawing is returned to Waskey Bridge, Inc. in writing by Waskey Bridge, Inc. Acceptance of possession of the drawing constitutes full agreement with the above conditions.

TYPE #	070-
PROJECT #	130003
DRAWING NUMBER	01
DRAWING CONTENTS:	3'-0" x 3'-0" x 3'-0" PULL BOX
PROJECT NAME:	WASKEY
CLIENT:	STANDARD PULL BOX
CONTACT NAME:	TBD
CONTACT PHONE:	#####

WASKEY
SINCE 1955 PRECAST CONCRETE PRODUCTS

2651 N. FLANNERY ROAD
BATON ROUGE, LA 70814
PH: (225) 926-5762
FAX: (225) 926-5766
www.waskey.com

DRWN. BY:	D. GUEDRY
CHGD. BY:	
APPR. BY:	
DATE:	06-19-13

NO.	DATE	REVISION DESCRIPTION	BY